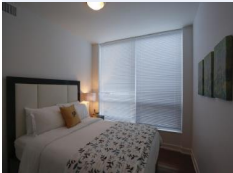
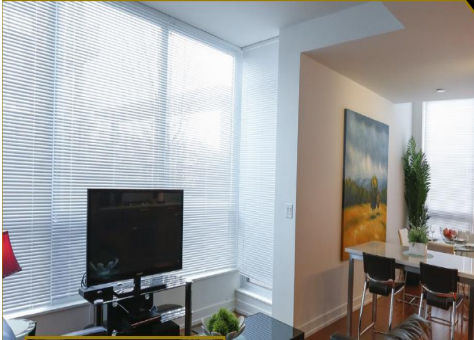


THE APARTMENT SERVICE WORLDWIDE



Waterfront

Calgary

The new Waterfront is ideally located across from the Bow River pathway system, and within walking distance of China Town, restaurants, the entertainment district, shopping, and the business sector. For the fitness enthusiast the pathway system offers walking, jogging, rollerblading, and cycling. You are also within walking distance to the YMCA and Prince's Island Park.



222 Riverfront Ave SW

Property Details

Apartment Type Name	Max Occupancy	Min Stay
1 Bedroom (Local rates and taxes may apply)	2	30 nights

Amenities

- 24-hour front desk
- Air conditioning
- Dishwasher
- Full kitchen
- High speed internet con...
- High speed wireless
- Internet services
- Parking
- Pots and pans
- Sitting area
- Tables and chairs

The Apartment Service, 5-6 Francis Grove,
London, SW19 4DT
Fax: +44 (0) 20 8944 6744
Tel: +44 (0) 20 8944 3612
info@apartmentservice.com
www.apartmentservice.com